

# CATALOG

## LAB 2022



**novasina**  
The Art of Precision Measurement



Novasina AG  
Neuheimstrasse 12 – CH-8853 Lachen  
Tel: +41 55 642 67 67 – Fax: +41 55 642 67 70  
[www.novasina.ch](http://www.novasina.ch) – [lab@novasina.ch](mailto:lab@novasina.ch)

LABMASTER-AW NEO	3
LABTOUCH-AW	7
LABSWIFT-AW	11
LABSTART-AW	14
CLIMMATE-AW	17

# LabMaster-aw neo

## THE talented all-rounder

Top water activity measuring device with technological lead, perfect for the daily routine determination of water activity in QA laboratories of food and pharmaceutical companies. This measuring instrument also provides support in the investigation of the causes of product spoilage, texture changes or rancidity.

Outstanding measuring instrument for effortless and worry-free water activity measurement and documentation, including:

- 21CFR11 compliant audit trail and user management
- automatic verification or adjustment
- contactless salt standard identification by RFID
- quick-Mode that guarantees results within 10 minutes

Additional features:

- full thermostatisation in the range of 0-60°C
- measuring range from 0.0300-1.0000a<sub>w</sub>
- easy handling of the protective filter thanks to a magnet fixation
- compliant with AOAC, ISO, USP and other standards.



Specifications	LabMaster-aw neo
Versions	ENS/ELS
Mains connection	> 100... 260 VAC > Power consumption: > Maximum: 42W > Normal operation: < 15W > Stand-By: < 0.1W
Power supply	90...264 VAC 50/60 Hz
Display	7" capacitive touchscreen
Communication	> RS-232 and USB 2.0 for PC > RS-232 for printer Bixolon SRP--275 III A > SD card > XML to LIMS
Housing	> Hybrid of painted steel housing and PUR > Weight: approx. 10kg > Dimensions (LxWxH)= 423x260x186mm height with open ceiling: 462mm
Measuring chamber volume	12mL
Dimension sample cups	diameter 40mm x height 13mm
Protection class	IP20
21CFR 11	> 21CFR11 compliant Audit Trail > 21CFR11 compliant user management

Measurement Specifications	parameter	
	water activity	temperature
Measuring principle	Electrolytic	Surface infrared sensor
Measuring range	0.0300...1.0000a <sub>w</sub>	0...60°C (32...140°F)
Adjustment range	0.0400...1.0000a <sub>w</sub>	N/A
Resolution	0.0001a <sub>w</sub>	0.01°C
Accuracy	+/-0.0030a <sub>w</sub> within the adjustment range	+/-0.1°C
Precision	+/-0.0020a <sub>w</sub> within the adjustment range	+/-0.1°C
Repeatability	+/-0.0010a <sub>w</sub> within calibration range	N/A
Temperature control	Programmable measuring temperature in the range of 0...60.00°C (32...140°F)	
Adjustment point (%rH)	4%, 6%, 11%, 33%, 53%, 58%, 75%, 84%, 90%, 97%, 100% Salt standards are equipped with RFID chips to ensure error-free identification by the LabMaster-aw neo.	

## Scope of Application:





### LabMaster-aw neo (ENS)

260 1500

- LabMaster-aw neo with awSens-ENS
- Measuring instrument LabMaster-aw neo
- 7 x SAL-T: 11,33,58,75,84,97 and 100
- 1 x service tool
- 40 x ePW sample dishes
- Factory calibration certificate
- SD Memory Card 8GB
- Power cable



### LabMaster-aw neo (ELS) for samples with alcohol (ethanol)

260 1700

- LabMaster-aw neo with awSens-ELS
- Measuring instrument LabMaster-aw neo
- 7 x SAL-T: 11,33,58,75,84,97 and 100
- 1 x service tool
- 40 x ePW sample dishes
- Factory calibration certificate
- SD Memory Card 8GB
- Power cable



### Special protection filters to protect the measuring cell

- 260 1662 -> eVC-18 (1 pc)
- 260 1724 -> eVC-18/eVALC (1 pc)
- 260 1330 -> Redox (1 pc)
- 260 1620 -> mechanical prefilter (1 pc)

Special filter which protect the measuring cell of the LabMaster-aw neo from volatiles. For detailed information on the most suitable filter for your application, please consult the Novasina filter selection data sheet.



### Regeneration-Kit

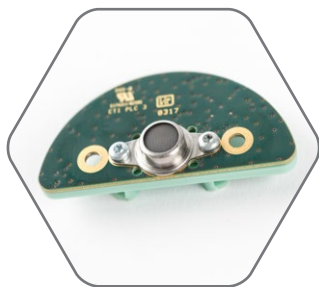
260 1962

Regeneration kit for LabStart-aw, LabSwift-aw, LabTouch-aw and LabMaster-aw neo measuring cells.

Charcoal regeneration kit for sensor regeneration after exposure to strong aroma, present in spices, herbs, essential oils and sweets like filled candies and chewing gum.

Only available for devices with CM-2 or ENS Sensor.

Please consult the Novasina „Instruction for using the Regeneration Kit“.



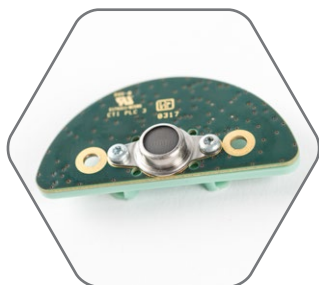
### aw-Sens ENS

260 1609

Interchangeable intelligent and factory-calibrated measuring cell system based on Novasina's „Novalyte“ technology.

The active heating prevents condensation on the moisture measuring element.

Only for LabMaster-aw neo!



### aw-Sens ELS for samples with alcohol (ethanol)

260 1615

Interchangeable intelligent and factory-calibrated measuring cell system based on Novasina's „Novalyte“ technology.

The active heating prevents condensation on the moisture measuring element.

This special sensor won't be affected by alcohol (ethanol).

Only for LabMaster-aw neo!



### SI-Set (Sorption Isotherm-Set)

260 1621

Set for the recording of an adsorption and desorption isotherm with the LabMaster-aw neo.

In order to understand processes such as texture change, crystallization/recrystallization, phase transitions, packaging optimization, storage conditions and effect on product stability and to work out appropriate models and limits, a sorption isotherm is often a helpful thing.

The Novasina sorption isotherm set can only be used in a LabMaster-aw neo and allows a simple recording of a sorption isotherm at max. 11 points in the range 0.04-1.00 $a_w$ . These curves are then suitable for the first general assessment of the relationship between water activity and product moisture.



### ePW Dispenser

260 1584

Dispenser with sample cups for  $a_w$ -measurement probes, which can be used with LabStart-aw, LabSwift-aw, LabTouch-aw and LabMaster-aw neo.

5 dispenser with 20 pcs of disposable sample trays.



### Wireless Barcode Scanner

260 1698

For scanning barcode batch-ID before starting a measurement for full data integrity.

Set consists of one Wireless Barcode Scanner and a bluetooth communication board.





**Printer BIXOLON SRP-275 III A**  
260 1874

Printer which is modified to work with the LabMaster-aw neo to print out test results and is supplied with 5 paper rolls.



**SAL-T salt standards**

Moisture standards based on saturated salt solutions in plastic tablets, with a moisture-permeable membrane. Each salt is delivered in a well closable container.

Consult the instruction manual of the instrument to see which points can be calibrated. Another SAL-T can be used for verification.

humidity values	P/N	Name	Calibration	Verification
4 %	111 7440	SAL-T 4	X	X
6 %	111 6453	SAL-T 6	X	X
11 %	111 0930	SAL-T 11	X	X
23 %	260 0960	SAL-T 23		X
33 %	111 0932	SAL-T 33	X	X
43 %	260 0961	SAL-T 43		X
53 %	111 0934	SAL-T 53	X	X
58 %	260 0189	SAL-T 58	X	X
75 %	111 0936	SAL-T 75	X	X
84 %	111 9886	SAL-T 84	X	X
90 %	111 0938	SAL-T 90	X	X
97 %	111 9887	SAL-T 97	X	X
100 %	260 1619	SAL-T 100	X	X



**SAL-T/C salt standards**

with European recognised certificate  
Moisture standards based on saturated salt solutions in plastic tablets, with a moisture-permeable membrane. Each salt is delivered with UKAS certificate, in a closable container

Consult the instruction manual of the instrument to see which points can be calibrated. Another SAL-T can be used for verification.

humidity values	P/N	Name	Calibration	Verification
6 %	111 7000	SAL-T/C 6	X	X
11 %	111 1056	SAL-T/C 11	X	X
33 %	111 1057	SAL-T/C 33	X	X
53 %	111 1060	SAL-T/C 53	X	X
58 %	260 0190	SAL-T/C 58	X	X
75 %	111 1063	SAL-T/C 75	X	X
84 %	260 0276	SAL-T/C 84	X	X
90 %	111 1065	SAL-T/C 90	X	X
97 %	111 9981	SAL-T/C 97	X	X



**Service Tool**  
260 1617

Tool for easy filter replacement and removal of the sample insert for sorption isotherms.

# LabTouch-aw

## Ideal for laboratory and production

Flexible and fast water activity meter with large touch screen. Easy to use, very well suited for AT-Line measurements in production or for the exact determination of  $a_w$ -values in the QC-Lab.

$a_w$  measuring instrument for:

- many samples, regardless of whether liquid, gel-like or solid
- partial temperature regulation as well as integrated sample surface temperature measurement enable accurate and reproducible measurements
- different measuring modes offers the possibility to carry out either a fast measurement on the production line or an exact  $a_w$  determination for quality assurance of the products
- ergonomic design and touch screen, it makes water activity measurement easier than ever before



Specifications	LabTouch-aw	Measurement Specifications	parameter	
			water activity	temperature
Versions	CM-2 Sensor/ CM-3 Sensor	Measuring principle	Electrolytic	Surface IR and NTC
Mains connection	5 VDC, +/-6%, max. Power consumption 10W	Measuring range	0.030...1.000 $a_w$	5...45°C (41...113°F)
Power supply	90...264 VAC 50/60 Hz	Adjustment range	0.110...0.970 $a_w$	N/A
Display	4.3" LC-colour display	Resolution	0.001 $a_w$	0.1°C
Communication	> USB for PC > SD/SD <sub>HC</sub> -card	Accuracy	+/-0.005 $a_w$ within calibration range	+/-0.10°C
Housing	> Two-part PC/ABS housing, weight: 2.8kg > Dimensions (L x W x H) = 200x285x105mm	Precision	+/-0.003 $a_w$ within the adjustment range	+/-0.1°C
Measuring chamber volume	15mL	Repeatability	+/-0.002 $a_w$ within calibration range	N/A
Dimension sample container	diameter 30mm x height 14mm	Temperature control	Programmable measuring temperature in the range of 15...30°C (59...86°F)	
Protection class	IP22	Adjustment point (%rH)	11%, 33%, 53%, 58%, 75%, 84%, 90%, 97%	
21CFR 11	partially compliant			

## Scope of Application:





**LabTouch-aw with CM-2 Sensor**  
260 1916

- Measuring instrument LabTouch-aw
- Euro or US adapter
- SD Memory card 8 GB
- 4 SAL-T: 33, 58, 75, 84
- 40 ePW sample dishes
- 5 x replacement Prefilter white
- Tension ring
- Factory calibration certificate
- Quick-Mode for fast measurement



**LabTouch-aw with CM-3 Sensor for samples with alcohol (ethanol)**  
260 1917

- Measuring instrument LabTouch-aw
- Euro or US adapter
- SD Memory card 8 GB
- 4 SAL-T: 33, 58, 75, 84
- 40 ePW sample dishes
- 5 x replacement Prefilter white
- Tension ring
- Factory calibration certificate
- Quick-Mode for fast measurement



**Power supply EU/US**  
260 0505

Power supply for LabStart-aw / LabSwift-aw / LabTouch-aw  
Attention: Please use the power adapter supplied by Novasina only.



**ePW Dispenser**  
260 1584

Dispenser with sample cups for  $a_w$ -measurement probes, which can be used with LabStart-aw, LabSwift-aw, LabTouch-aw and LabMaster-aw neo.  
5 dispenser with 20 pcs of disposable sample trays.





### SAL-T salt standards

Moisture standards based on saturated salt solutions in plastic tablets, with a moisture-permeable membrane. Each salt is delivered in a well closable container.

Consult the instruction manual of the instrument to see which points can be calibrated. Another SAL-T can be used for verification.

humidity values	P/N	Name	Calibration	Verification
4 %	111 7440	SAL-T 4		X
6 %	111 6453	SAL-T 6		X
11 %	111 0930	SAL-T 11	X	X
23 %	260 0960	SAL-T 23		X
33 %	111 0932	SAL-T 33	X	X
43 %	260 0961	SAL-T 43		X
53 %	111 0934	SAL-T 53	X	X
58 %	260 0189	SAL-T 58	X	X
75 %	111 0936	SAL-T 75	X	X
84 %	111 9886	SAL-T 84	X	X
90 %	111 0938	SAL-T 90	X	X
97 %	111 9887	SAL-T 97	X	X
100 %	260 1619	SAL-T 100		X



### SAL-T/C salt standards

with European recognised certificate  
Moisture standards based on saturated salt solutions in plastic tablets, with a moisture-permeable membrane. Each salt is delivered with UKAS certificate, in a closable container.

Consult the instruction manual of the instrument to see which points can be calibrated. Another SAL-T can be used for verification.

humidity values	P/N	Name	Calibration	Verification
6 %	111 7000	SAL-T/C 6		
11 %	111 1056	SAL-T/C 11	X	X
33 %	111 1057	SAL-T/C 33	X	X
53 %	111 1060	SAL-T/C 53	X	X
58 %	260 0190	SAL-T/C 58	X	X
75 %	111 1063	SAL-T/C 75	X	X
84 %	260 0276	SAL-T/C 84	X	X
90 %	111 1065	SAL-T/C 90	X	X
97 %	111 9981	SAL-T/C 97	X	X



### CM-2 Measuring cell

111 9983

Interchangeable intelligent and factory-calibrated measuring cell system based on Novasina „Novalyte“ technology. The active heating prevents condensation on the moisture measuring element.

Caution: Never touch the front area of the measuring cell with your hands or any other object!



### CM-3 Measuring cell for samples with alcohol (ethanol)

111 1615

Interchangeable intelligent and factory-calibrated measuring cell system based on Novasina „Novalyte“ technology. The active heating prevents condensation on the moisture measuring element.

This special sensor won't be affected by alcohol (ethanol)

Caution: Never touch the front area of the measuring cell with your hands or any other object!



### Special protection filters to protect the measuring cells

- 111 1001 -> eVC-21 (10 pcs)
- 111 1003 -> eVC-26 (10 pcs)
- 111 0995 -> eVALC (2 pcs)
- 111 7212 -> Redox (1 pc)

Various filter to protect the sensor against aggressive vapours, alcohols, glycols, etc.  
For detailed information on the most suitable filter for your application, please consult the Novasina filter selection data sheet.



### Regeneration-Kit

260 1962

Regeneration kit for LabStart-aw, LabSwift-aw, LabTouch-aw and LabMaster-aw neo measuring cells.

Charcoal regeneration kit for sensor regeneration after exposure to strong aroma, present in spices, herbs, essential oils and sweets like filled candies and chewing gum.

Only available for devices with CM-2 or ENS Sensor.

Please consult the Novasina „Instruction for using the Regeneration Kit“.



### Spare parts for measuring head LabStart-aw / LabSwift-aw / LabTouch-aw

- 260 0211 Sealing ring: 1
- 260 0183 Prefilter white: 2
- 260 0210 Tension ring: 3

- 1 Sealing ring
- 2 Prefilter white, 5 pcs
- 3 Tension ring for fixing protection filter

# LabSwift-aw

## Once portability is required

The LabSwift-aw with rechargeable battery offers this portable possibility. The instrument is designed for daily use and for samples in the lower to medium  $a_w$  range.

Looking for a water activity instrument with local flexibility? Then the LabSwift-aw is exactly what you need:

- due to rechargeable battery, the device can be placed anywhere
- suitable for products such as powder or dried fruits with low to medium  $a_w$ -values (the measuring device does not have a temperature stabilisation of the measuring chamber)
- reliable and accurate measurement results as the proven resistive electrolytic measuring technology of Novasina is implemented



### Specifications

	LabSwift-aw
Versions	With and without battery pack
Mains connection	5 VDC, +/-6%, max. Power consumption 10W
Power supply	90...264 VAC 50/60 Hz
Display	LC-display, dimensions: 35 x 69mm
Communication	SD/SD <sub>HC</sub> - card
Housing	> Two-part PC/ABS housing, weight: 1.2kg > Dimensions (L x W x H) = 225x140x85mm
Measuring chamber volume	15mL
Dimension sample container	Diameter 30mm x height 14mm
Protection class	IP22
21CFR 11	partially compliant

### Measurement Specifications

	parameter	
	water activity	temperature
Measuring principle	Electrolytic	surface IR and NTC
Measuring range	0.030...1.000 $a_w$	5...45°C (41...113°F)
Adjustment range	0.110...0.900 $a_w$	N/A
Resolution	0.001 $a_w$	0.1°C
Accuracy	+/-0.010 $a_w$ within calibration range	+/-0.15°C
Precision	+/-0.003 $a_w$ within the adjustment range	+/-0.1°C
Repeatability	+/-0.002 $a_w$ within calibration range	N/A
Temperature control	no temperature control available	
Adjustment point (%rH)	11%, 33%, 53%, 58%, 75%, 84%, 90%	

### Scope of Application:





### LabSwift-aw (without battery)

260 0177

- Measuring instrument LabSwift-aw
- Euro or US mains adapter
- SD card 8 GB
- 3 pieces SAL-T: 11, 58, 84
- 40 sample dishes ePW
- Replacement prefilter white (5 pcs)
- Tension ring
- Factory test certificate



### LabSwift-aw (with battery)

260 0179

- Measuring instrument LabSwift-aw
- Rechargeable battery incl. charging electronics
- Euro or US mains adapter
- SD card 8 GB
- 3 pieces SAL-T: 11, 58, 84
- 40 sample dishes ePW
- Replacement prefilter white (5 pcs)
- Tension ring
- Factory test certificate



### Power supply EU/US

260 0505

Power supply for LabStart-aw / LabSwift-aw / LabTouch-aw  
Attention: Please use the power adapter supplied by Novasina only.



### Special protection filters to protect the measuring cells

111 1001 -> eVC-21 (10 pcs)

111 1003 -> eVC-26 (10 pcs)

111 0995 -> eVALC (2 pcs)

111 7212 -> Redox (1 pc)

Various filter to protect the sensor against aggressive vapours, alcohols, glycols, etc.  
For detailed information on the most suitable filter for your application, please consult the Novasina filter selection data sheet.



### Regeneration-Kit

260 1962

Regeneration kit for LabStart-aw, LabSwift-aw, LabTouch-aw and LabMaster-aw neo measuring cells.

Charcoal regeneration kit for sensor regeneration after exposure to strong aroma, present in spices, herbs, essential oils and sweets like filled candies and chewing gum.

Only available for devices with CM-2 or ENS Sensor.

Please consult the Novasina „Instruction for using the Regeneration Kit“.



### ePW Dispenser

260 1584

Dispenser with sample cups for  $a_w$ -measurement probes, which can be used with LabStart-aw, LabSwift-aw, LabTouch-aw and LabMaster-aw neo.

5 dispenser with 20 pcs of disposable sample trays.



### CM-2 Measuring cell

111 9983

Interchangeable intelligent and factory calibrated measuring cell system based on Novasina „Novalyte“ technology. The active heating prevents condensation on the moisture measuring element.

Caution: Never touch the front area of the measuring cell with your hands or any other object!



### Spare parts for measuring head LabStart-aw / LabSwift-aw / LabTouch-aw

260 0211 Sealing ring: 1

260 0183 Prefilter white: 2

260 0210 Tension ring: 3

1 Sealing ring

2 Prefilter white, 5 pcs

3 Tension ring for fixing protection filter



### SAL-T salt standards

Moisture standards based on saturated salt solutions in plastic tablets, with a moisture-permeable membrane. Each salt is delivered in a well closing can.

Consult the instruction manual of the instrument to see which points can be calibrated. Another SAL-SC can be used for verification.

humidity values	P/N	Name	Calibration	Verification
4 %	111 7440	SAL-T 4		X
6 %	111 6453	SAL-T 6		X
11 %	111 0930	SAL-T 11	X	X
23 %	260 0960	SAL-T 23		X
33 %	111 0932	SAL-T 33	X	X
43 %	260 0961	SAL-T 43		X
53 %	111 0934	SAL-T 53	X	X
58 %	260 0189	SAL-T 58	X	X
75 %	111 0936	SAL-T 75	X	X
84 %	111 9886	SAL-T 84	X	X
90 %	111 0938	SAL-T 90	X	X
97 %	111 9887	SAL-T 97		X
100 %	260 1619	SAL-T 100		X



### SAL-T/C salt standards UKAS

with European recognised certificate  
Moisture standards based on saturated salt solutions in plastic tablets, with a moisture-permeable membrane. Each salt is delivered with UKAS certificate, in a well closable container.

Consult the instruction manual of the instrument to see which points can be calibrated. Another SAL-SC can be used for verification.

humidity values	P/N	Name	Calibration	Verification
6 %	111 7000	SAL-T/C 6		X
11 %	111 1056	SAL-T/C 11	X	X
33 %	111 1057	SAL-T/C 33	X	X
53 %	111 1060	SAL-T/C 53	X	X
58 %	260 0190	SAL-T/C 58	X	X
75 %	111 1063	SAL-T/C 75	X	X
84 %	260 0276	SAL-T/C 84	X	X
90 %	111 1065	SAL-T/C 90	X	X
97 %	111 9981	SAL-T/C 97		X



# LabStart-aw

## Ideal for the first step

Inexpensive  $a_w$  meter for measurements in the low to medium  $a_w$  range, without having high demands on accuracy and reproducibility.

Ideal for the first step:

- test water activity measurement without having to spend a lot of money
- designed as a „starter“, proven Novasina technology inside, especially the resistive electrolytic sensor
- covers a lower demand on accuracy and reproducibility



### Specifications

	LabStart-aw
Versions	N/A
Mains connection	5 VDC, +/-6%, max. Power consumption 10W
Power supply	90...264 VAC 50/60 Hz
Display	LC-display, dimensions: 35 x 69mm
Communication	not possible
Housing	> Two-part PC/ABS housing, weight: 1.2kg > Dimensions (L x W x H) = 225x140x85mm
Measuring chamber volume	15mL
Dimension sample container	diameter 30mm x height 14mm
Protection class	IP22
21CFR 11	not compliant

### Measurement Specifications

	parameter	
	water activity	temperature
Measuring principle	electrolytic	NTC
Measuring range	0.03...1.00 $a_w$	0...30°C (59...86°F)
Adjustment range	0.33...0.75 $a_w$	N/A
Resolution	0.01 $a_w$	0.1°C
Accuracy	+/-0.03 $a_w$ within calibration range	+/-0.15°C
Precision	+/-0.01 $a_w$ within the adjustment range	+/-0.1°C
Repeatability	+/-0.01 $a_w$ within calibration range	N/A
Temperature control	no temperature control available	
Adjustment point (%rH)	33%, 75%	

### Scope of Application:





### LabStart-aw

260 0992

- Measuring instrument LabStart-aw
- Euro or US mains adapter
- 1 piece SAL-T 75
- 20 Sample dishes ePW
- Prefilter white (5 Stk.)
- Tension ring
- Factory calibration certificate



### Power supply EU/US

260 0505

Power supply for LabStart-aw / LabSwift-aw / LabTouch-aw  
Attention: Please use the power adapter supplied by Novasina only.



### SAL-T salt standards

Moisture standards based on saturated salt solutions in plastic tablets, with a moisture-permeable membrane. Each salt is delivered in a well closing can. Consult the instruction manual of the instrument to see which points can be calibrated. Another SAL-T can be used for verification.

humidity values	P/N	Name	Calibration	Verification
4 %	111 7440	SAL-T 4		X
6 %	111 6453	SAL-T 6		X
11 %	111 0930	SAL-T 11		X
23 %	260 0960	SAL-T 23		X
33 %	111 0932	SAL-T 33	X	X
43 %	260 0961	SAL-T 43		X
53 %	111 0934	SAL-T 53		X
58 %	260 0189	SAL-T 58		X
75 %	111 0936	SAL-T 75	X	X
84 %	111 9886	SAL-T 84		X
90 %	111 0938	SAL-T 90		X
97 %	111 9887	SAL-T 97		X
100 %	260 1619	SAL-T 100		X



### SAL-T/C salt standards UKAS

with European recognised certificate

Moisture standards based on saturated salt solutions in plastic tablets, with a moisture-permeable membrane. Each salt is delivered with UKAS certificate, in a well closable container.

Consult the instruction manual of the instrument to see which points can be calibrated. Another SAL-T can be used for verification.

humidity values	P/N	Name	Calibration	Verification
6 %	111 7000	SAL-T/C 6		X
11 %	111 1056	SAL-T/C 11		X
33 %	111 1057	SAL-T/C 33	X	X
53 %	111 1060	SAL-T/C 53		X
58 %	260 0190	SAL-T/C 58		X
75 %	111 1063	SAL-T/C 75	X	X
84 %	260 0276	SAL-T/C 84		X
90 %	111 1065	SAL-T/C 90		X
97 %	111 9981	SAL-T/C 97		X

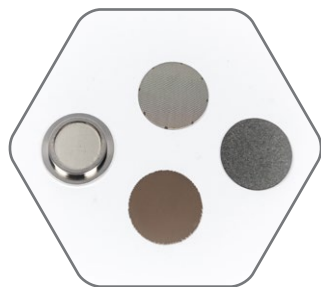


### ePW Dispenser

260 1584

Dispenser with sample cups for  $a_w$ -measurement probes, which can be used with LabStart-aw, LabSwift-aw, LabTouch-aw and LabMaster-aw neo.

5 dispenser with 20 pcs of disposable sample trays.



### Special protection filters to protect the measuring cells

111 1001 -> eVC-21 (10 pcs)

111 1003 -> eVC-26 (10 pcs)

111 0995 -> eVALC (2 pcs)

111 7212 -> Redox (1 pc)

Various filter to protect the sensor against aggressive vapours, alcohols, glycols, etc.

For detailed information on the most suitable filter for your application, please consult the Novasina filter selection data sheet.



### Regeneration-Kit

260 1962

Regeneration kit for LabStart-aw, LabSwift-aw, LabTouch-aw and LabMaster-aw neo measuring cells.

Charcoal regeneration kit for sensor regeneration after exposure to strong aroma, present in spices, herbs, essential oils and sweets like filled candies and chewing gum.

Only available for devices with CM-2 or ENS Sensor.

Please consult the Novasina „Instruction for using the Regeneration Kit“.



### Spare parts for measuring head LabStart-aw / LabSwift-aw / LabTouch-aw

260 0211 Sealing ring: 1

260 0183 Prefilter white: 2

260 0210 Tension ring: 3

1 Sealing ring

2 Prefilter white, 5 pcs

3 Tension ring for fixing protection filter



### CM-4 measuring cell

260 0995

Only for LabStart-aw!

Intelligent and factory calibrated measuring cell system based on the unique Novasina „Novalyte“ technology. The built-in active heating system.

Caution: Never touch the front area of the measuring cell with hands or any other object!

# ClimMate-aw

## Handheld meter for large samples

Handheld instrument with big sample chamber to measure larger quantities or even bulky samples. Can be used in raw material control or in production.

An inexpensive  $a_w$  meter for:

- very suitable as a first  $a_w$  measurement indication
- portable version thanks to the battery power supply
- space for large sample quantities or pieces
- only for dry samples, not for any liquid samples
- no temperature control and no moisture equilibrium monitoring



Specifications		Measurement Specifications		
	ClimMate-aw		parameter	
			water activity	temperature
Versions	N/A	Measuring principle	electrolytic	NTC
Mains connection	4 x 1.5 VDC Alkaline batteries or adapter 5 VDC	Measuring range	0.03...1.00 $a_w$	0...50°C (32...122°F)
Power supply	90...264 VAC 50/60 Hz	Adjustment range	0.11...0.90 $a_w$	N/A
Display	Capacitive TFT, 240 x 320px	Resolution	0.01 $a_w$	0.1°C
Communication	USB for PC connection	Accuracy	+/-0.02 $a_w$ within calibration range	+/-0.15°C
Housing	> Plastic housing, Weight: 0.2kg > Dimensions (L x W x H) = 62 x 170 x 34mm	Precision	+/-0.01 $a_w$ within the adjustment range	+/-0.1°C
Measuring chamber volume	480mL	Repeatability	+/-0.01 $a_w$ within calibration range	N/A
Dimension sample container	diameter 80mm x height 95mm	Temperature control	no temperature control and no moisture equilibrium detection available	
Protection class	IP54	Adjustment point (%rH)	Only possible with nSoft-CAL: 11%, 33%, 53%, 75%, 90%	
21CFR 11	not compliant			

### Scope of Application:





### ClimMate-aw Set

260 1288

- Multifunction measuring device ClimMate
- USB connection cable 1.8m
- nSens cable extension 2m
- Sample cup for large volumes
- 4x alkaline batteries LR6 AA 1,5V
- nSens-HT-EIS sensor incl. nLink-UMB adapter
- Humidity standards SAL-SC 33 & 75
- Adapter SAL-SC for nSens-HT probes
- Factory calibration certificates and instructions
- Transport case for instrument and sensor
- SmartGraph III software



### SAL-SC with factory certificate

#### Humidity Generators SAL-SC with factory certificate

Moisture standards based on saturated salt solutions in plastic cylinders, with permeable membrane. Each salt is stored in a well closable container.

Consult the instruction manual of the instrument to see which points can be calibrated. Another SAL-SC can be used for verification.

humidity values	P/N	Name	Cali-bration	Verifi-cation
6 %	260 0978	SAL-SC 6		X
11 %	111 0885	SAL-SC 11	X	X
33 %	111 0855	SAL-SC 33	X	X
53 %	111 0857	SAL-SC 53	X	X
58 %	260 0219	SAL-SC 58		X
75 %	111 0859	SAL-SC 75	X	X
84 %	251 8965	SAL-SC 84		X
90 %	111 0896	SAL-SC 90	X	X
97 %	251 8966	SAL-SC 97		X



### SAL-SC with UKAS certificate

#### Humidity Generators SAL-SC with UKAS certificate

Moisture standards based on saturated salt solutions in plastic cylinders, with moisture permeable membrane. Each salt is delivered with UKAS certificate, in a well closable container.

Consult the instruction manual of the instrument to see which points can be calibrated. Another SAL-SC can be used for verification.

humidity values	P/N	Name	Cali-bration	Verifi-cation
11 %	111 1044	SAL-SC 11	X	X
33 %	111 1037	SAL-SC 33	X	X
53 %	111 1040	SAL-SC 53	X	X
75 %	111 1035	SAL-SC 75	X	X
84 %	260 1272	SAL-SC 84		X
90 %	111 1032	SAL-SC 90	X	X
97 %	260 1275	SAL-SC 97		X





**nSoft-CAL Set**

260 1094

Windows based software for the calibration and adjustment of nSens probes on the PC. Runs on Windows 98/2000/XP/Vista/Windows 7 & 8. Including Link-USB connection cable, 1.8m length.



**USB power supply to ClimMate**

260 0872

Power supply for external power supply with USB plug connection for ClimMate. Internal batteries are not discharged. USB cable is included in ClimMate-aw Set!

Input: 100...260V AC  
50/60 Hz  
Output: +5V DC USB  
1200mA / 6W



**Adapter SAL-SC / nSens**

260 1143

for nSens probes with  $\varnothing$  13mm  
Plastic adapter for humidity standards as reduction and radial seal on the extent of the respective sensor.



**nSens-HT-EIS**

260 1803

Digital nSens-HT humidity & temperature sensor with resistive electrolytic humidity and NTC temperature sensor. With nCap-PS protective filter cap. The calibration points are stored in the sensor. Calibration and adjustment is carried out with separately available calibration software nSoft-CAL. The sensor is pluggable and can be replaced very quickly and easily.



**Sample cup**

260 1254

For dry samples with large volumes such as grain, granules, powders etc. Including screw connection for fastening the nSens-HT-ENS probe.

Dimension:  $\varnothing$ 80mm x height 95mm  
Volume: approx. 400 cm<sup>3</sup>  
Material: Polypropylene